



NATIONAL TALENT SEARCH EXAMINATION  
(NTSE-2021) STAGE -1  
STATE : JHARKHAND PAPER : MAT

Date: 13/12/2020

Max. Marks: 100

## SOLUTIONS

Time allowed: 120 mins

1. Choose the odd one:

- (1) Patna (2) Shimla (3) Bhopal (4) Ujjain

Ans. (4)

Sol. It is not capital of state.

2. Which alternative replaces the question mark?

45, 34, 25, 18, ?

- (1) 11 (2) 12 (3) 13 (4) 14

Ans. (3)

Sol. 
$$\begin{array}{ccccccccc} & -11 & & -9 & & -7 & & -5 & & \\ & \frown & & \frown & & \frown & & \frown & & \\ 45 & & 34 & & 25 & & 18 & & 13 & \end{array}$$

3. 2 \_\_\_\_\_ 1 3 \_\_\_\_\_ 4 \_\_\_\_\_ 3 \_\_\_\_\_ 3 2 4 1 3

- (1) 213421 (2) 421241 (3) 241321 (4) 123421

Ans. (2)

Sol. 2, 4, 1, 3 make a series.

4. What will come in place of question mark (?)

ECA, JHF, OMK, ?

- (1) LNP (2) RPT (3) QPN (4) TRP

Ans. (4)

Sol. 
$$\begin{array}{ccc} E & C & A \\ 5 & 3 & 1 \\ \downarrow & \downarrow & \downarrow \\ J & H & F \\ 10 & 8 & 6 \\ \downarrow & \downarrow & \downarrow \\ Q & M & K \\ 15 & 13 & 11 \\ \downarrow & \downarrow & \downarrow \\ 20 & 18 & 16 \\ T & R & P \end{array}$$

5. How many meaningful two-lettered English words can be made by taking letters from the latter half of the English alphabet?

- (1) One (2) Two (3) Three (4) More than three

Ans. (4)

Sol. OR, NO, ON, OX

6. Some letters are given with numbers 1 to 7. Choose the order of the letters by which a meaningful English word can be made :

S O U B R C E  
1 2 3 4 5 6 7

- (1) 4216573 (2) 2416537 (3) 2146357 (4) 2416357

Ans. (4)

Sol. OBSCURE

7. Which of the following letters will come in place of question mark (?) in the chain of letters of English alphabet?

BZA DYX FXE ? JVI

- (1) HUG (2) UHG (3) HWG (4) WHG

Ans. (3)

Sol.

	B	Z	A
	2	26	1
+2 ↓	↓	↓ -1	↓ +2
	D	Y	C
	4	25	3
+2 ↓	↓	↓ -1	↓ +2
	F	X	E
	6	24	5
+2 ↓	↓	↓ -1	↓ +2
	H	W	G
+2 ↓	↓	↓ -1	↓ +2
	J	V	I
	10	22	9

8. Choose the word from the following alternatives which cannot be made with the letters of the given word :

COMPREHENSION

- (1) COMPRISE (2) PENSION (3) ONION (4) PREACH

Ans. (4)

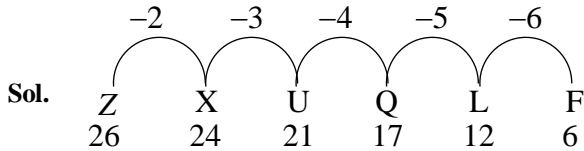
Sol. Letter A is not present in COMPREHENSION

9. Choose the alternative which will complete the following sequence :

ZXUQL ?

- (1) F (2) E (3) C (4) H

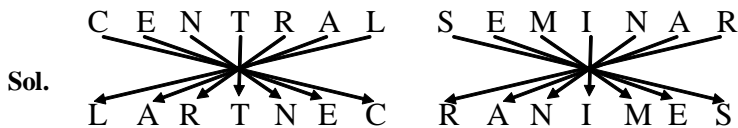
Ans. (1)



10. In a code language CENTRAL is written as LARTNEC then in that language what will be written for SEMINAR?

- (1) NARMES (2) MESIRAN (3) RANIMES (4) NARISEM

Ans. (3)



11. By using the letters of the word 'AIPR' only once how many meaningful English words can be made?

- (1) One (2) Two (3) Three (4) Four

Ans. (1)

Sol. PAIR

12. In the given question if the letters of the word are rearranged then comes the name of one of which of the following alternatives?

LORAMIGD

- (1) Bird (2) Animal (3) Tree (4) Flower

Ans. (4)

Sol. MARIGOLD - it is flower.

13. By using the letters of 'ADER' only once how many meaningful English words can be made?

- (1) One (2) Two (3) Three (4) Four

Ans. (3)

Sol. DEAR, DARE, READ

14. If in a code language HANUMAN is written as MFSZRFS, then what will BINAY be written in that code language?

- (1) GSNTD (2) GNSFD (3) GSNDT (4) GNSDT

Ans. (2)

Sol.

	8	1	14	21	13	1	14	2	9	14	1	25
	H	A	N	U	M	A	N	B	I	N	A	Y
	+5↓	↓	↓	↓	↓	↓	↓	+5↓	↓	↓	↓	↓
	M	F	S	Z	R	F	S	G	N	S	F	D
	13	6	19	26	18	6	19	7	14	19	6	4

15. If in a code language MOTHER is written as OQVJGT, then what way SISTER will be written?

- (1) CJUVGT (2) TJTUF S (3) TJTUES (4) UKUVGT

Ans. (4)

Sol.

	13	15	20	8	5	18	19	9	19	20	5	18
	M	O	T	H	E	R	S	I	S	T	E	R
	+2↓	↓	↓	↓	↓	↓	+2↓	↓	↓	↓	↓	↓
	O	Q	V	J	G	T	U	K	U	V	G	T
	15	17	22	10	7	20	21	11	21	22	7	20

16. If in a code language A is written as 2, B is written as 4 and C is written as 6, then in that language 12 10 10 8 will be written as

- (1) DEEP (2) DOOR (3) DEAF (4) FEED

Ans. (4)

$$A = 2(1 \times 2) \quad 12 \div 2 = 6 = F$$

$$B = 4(2 \times 2) \quad 10 \div 2 = 5 = E$$

Sol.  $C = 6(3 \times 2) \quad 10 \div 2 = 5 = E$

$$8 \div 2 = 4 = D$$

17. In a symbolic language POCKET is written as QNDJFS, then in that language what will DEAR be written ?

- (1) EDBQ (2) CFBQ (3) EDCQ (4) EFDQ

Ans. (1)

Sol.

	P	O	C	K	E	T	D	E	A	R
	+1↓	-1↓	+1↓	-1↓	+1↓	-1↓	+1↓	-1↓	+1↓	-1↓
	Q	N	D	J	F	S	E	D	B	Q

18. In a code language CHAIR is written as EGCHT, then in that language PROVE will be written as  
 (1) NSNXD (2) RPPVG (3) NRNUD (4) RQQUG

Ans. (4)

Sol.

+2	↓	C	+2	↓	H	+2	↓	A	-1	↓	I	+2	↓	R	+2	↓	P	-1	↓	R	+2	↓	O	-1	↓	V	+2	↓	E
		E			G			C			H			T			R			Q			Q			U			G

19. As 'Warrior' IS RELATED TO 'battlefield' in the same way to what is 'steward' RELATED?

- (1) Shop (2) Restaurant (3) Stage (4) Garage

Ans. (2)

Sol. Warriors role is in battlefield, similarly steward roles is in restaurant.

20. As 'white pigeon' is related to 'peace', in the same way 'black colour' is related to which of the following ?

- (1) Hospital (2) Power (3) Sorrow (4) Bravery

Ans. (2)

Sol. White pigeon depicts peace, similarly black colour depicts power.

21. As 'Chicago' is related to America, in the same way 'Sydney' is related to

- (1) Egypt (2) Australia (3) India (4) England

Ans. (2)

Sol. Chicago is a city in America, similarly Sydney is a city in Australia.

22. As the 'Publisher' is related to 'Book', in the same way 'Flim' is related to

- (1) Director (2) Actor (3) Producer (4) Hero

Ans. (3)

Sol. Publisher invest in book, similarly producer invest in film.

23. As 'Lotus' is related to 'India', in the same way 'Great Britain' is related to

- (1) Jasmine (2) Rose (3) Chrysanthemum (4) White Lily

Ans. (2)

Sol. Lotus is national flower of India, similarly rose national flower Great Britain.

24. Tripura : Agartala : : Mizoram : ?

- (1) Aizawl (2) Imphal (3) Kavaratti (4) Silvassa

Ans. (1)

Sol. Tripura ----- Agartala (Capital)

Mizoram ----- Aizawl (Capital)

25. Rohu : Fish : : Bat : ?

- (1) Amphibian (2) Reptile (3) Mammal (4) Aquatic

Ans. (3)

Sol. Rohu belongs to fish family, similarly bat belongs to mammal.

26. Thermometer : Temperature : : Lactometer : ?

- (1) Purity of curd                      (2) Purity of milk                      (3) Purity of water                      (4) Atmospheric pressure

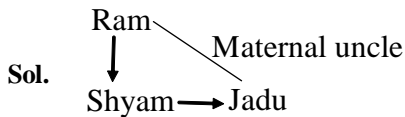
Ans. (2)

Sol. Thermometer measure temperature, similarly lactometer measure purity of milk.

27. Shyam is some of Ram and maternal brother of Jadu, then how is Ram related to Jadu?

- (1) Paternal uncle                      (2) Maternal uncle                      (3) Father                      (4) Maternal grandfather

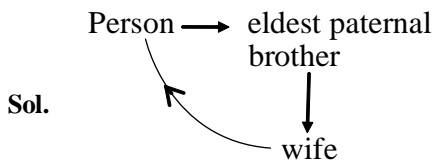
Ans. (2)



28. In a marriage reception, pointing to a lady a man said, 'That lady is the only daughter of the father-in-law of my eldest brother'. What is the relation of that man with lady?

- (1) Husband's younger brother                      (2) Brother  
(3) Nephew                      (4) Father

Ans. (1)



29. Second : Time : : Pascal : ?

- (1) Resistance                      (2) Illumination                      (3) Potential                      (4) Pressure

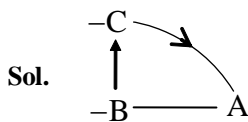
Ans. (4)

Sol. Second is unit of time, similarly is unit of pressure.

30. B is the sister of A and C is the mother of B. How is C related to A?

- (1) Mother                      (2) Father                      (3) Maternal aunt                      (4) Maternal grandmother

Ans. (1)

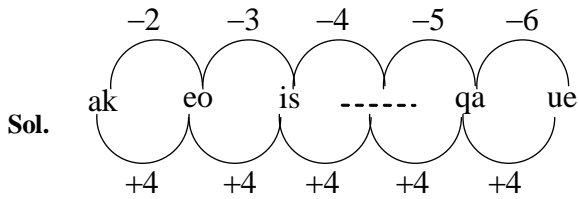


31. Following the pattern of the following letter series fill in the blank space :

ak, eo, is, \_\_\_\_\_ qa, ue

- (1) lv                                      (2)mw                                      (3)nx                                      (4)oe

Ans. (2)

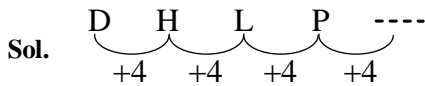


32. What will come next in series

D, H, L, P

- (1) Q                                      (2)S                                      (3)U                                      (4)T

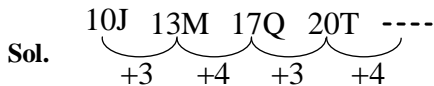
Ans. (4)



33. 10J, 13M, 17Q, 20T, .....

- (1) 24X                                      (2)25Y                                      (3)26Z                                      (4)23V

Ans. (1)



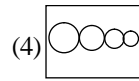
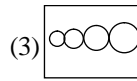
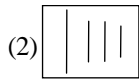
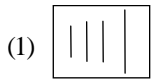
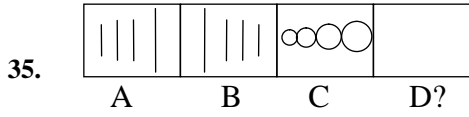
34. Telephone : Graham Bell : : Electric Bulb : ?

- (1) J.L. Baird                                      (2) Thomas Alva Edison                                      (3) James Watt                                      (4) G. Marconi

Ans. (2)

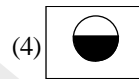
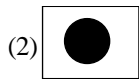
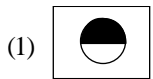
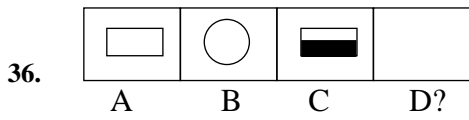
Sol. Telephone was invented by Graham Bell , similarly electric bulb was invented by Thomas Alva Edison.

In which of the following question a group of three pictures are give. You have to find out the fourth picture. You have to select the answer from 1, 2, 3 or 4 :



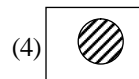
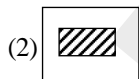
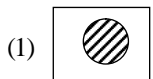
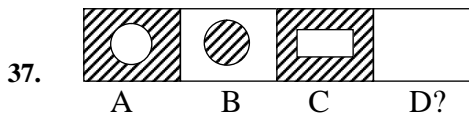
Ans. (4)

Sol. Mirror image.



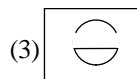
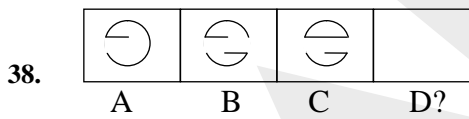
Ans. (4)

Sol. Similar pattern.



Ans. (2)

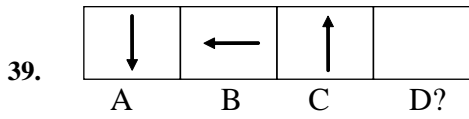
Sol. Similar pattern.

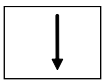


Ans. (4)

Sol. Visualisation.

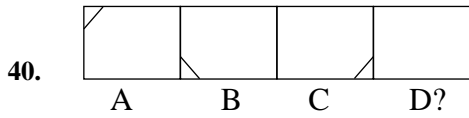




- (1)  (2)  (3)  (4) 

Ans. (3)

Sol. Clockwise rotation.



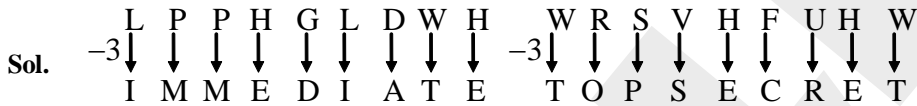
- (1)  (2)  (3)  (4) 

Ans. (1)

Sol. Anticlockwise rotation.

41. If in a code language LPPHGLDWH is written as IMMEDIATE then WRSVHFUHW will be written as  
 (1) YUVKIXKY (2) FAITHFUL (3) TOPSBRASS (4) TOPSECRET

Ans. (4)



42. If TOM = 48 and DICK = 27 then HARRY will mean

- (1) 50 (2) 60 (3) 70 (4) 80

Ans. (3)

T O M  
 $20 + 15 + 13 = 48$   
 D I C K  
 $4 + 9 + 3 + 11 = 27$   
 H A R R Y  
 $8 + 1 + 18 + 18 + 25 = 70$

Sol.

43. If in a code language SISTER is written as 535301, UNCLE is written as 84670 and BOY is written as 129 then in that language SON will be written as

- (1) 923                                      (2) 524                                      (3) 342                                      (4) 872

Ans. (2)

S	I	S	T	E	R	U	N	C	L	E
↓	↓	↓	↓	↓	↓	↓	↓	↓	↓	↓
5	3	5	3	0	1	8	4	6	7	0

Sol. 

B	O	Y	S	O	N
↓	↓	↓	↓	↓	↓
1	2	9	5	2	4

44. If in a code language 5234 is written for RING and 6109 for FAST, then in that language 095234 will be written for

- (1) STRING                                      (2) NGRIST                                      (3) STRINIG                                      (4) STRIGN

Ans. (1)

5	2	3	4	6	1	0	9
↓	↓	↓	↓	↓	↓	↓	↓
R	I	N	G	F	A	S	T

Sol. 

0	9	5	2	3	4
↓	↓	↓	↓	↓	↓
S	T	R	I	N	G

45. Rita is taller than Neeta but shorter than Sita, Sita is shorter than Gita then who is the tallest among them?

- (1) Rita                                      (2) Neeta                                      (3) Sita                                      (4) Gita

Ans. (4)

Sol. Gita ← Sita ← Rita ← Neeta

46. If in a code language FIRE is written as DGPC, then in that code language SHOT will be written as

- (1) FQMR                                      (2) QMFR                                      (3) QFMR                                      (4) QREM

Ans. (3)

F	I	R	E	S	H	O	T
↓	↓	↓	↓	↓	↓	↓	↓
-2	-2	-2	-2	-2	-2	-2	-2
D	G	P	C	Q	F	M	R

47. In the way 'horse' is related to 'run' in the same way 'bird' is related to

- (1) move                                      (2) run                                      (3) crawl                                      (4) fly

Ans. (4)

Sol. Horse has trait of running, simirlary flying is trait of bird.

**48.** In the way 'voltmeter' is related to 'potential difference', in the same way 'Ammeter' is related to  
(1) Rain (2) Earthquake (3) Electric current (4) Temperature

**Ans.** (3)

**Sol.** Potential difference is measured by volt meter and electric current is measured by Ammeter.

**49.** In the way 'Indonesia' is related to 'Jakarta' in the same way 'Nepal' is related to

(1) Melbourne (2) Dhaka (3) Kathmandu (4) Islamabad

**Ans.** (3)

**Sol.** Jakarta is capital of Indonesia in same way Kathmandu is capital of Nepal.

**50.** In the way India is related to Ashok Chakra, the same way Sri Lanka is related to

(1) Lily (2) Lion and sword (3) Moon and star (4) Red star

**Ans.** (2)

**Sol.** Ashok Chakra is a national emblem of India, similarly Lion and sword is the national emblem of Sri Lanka.

**51.** In the way 'Hockey' is related to 'India' in the same way 'Spain' is related to

(1) Baseball (2) Bull fight (3) Football (4) Ice hockey

**Ans.** (3)

**Sol.** Hockey is national game of India, similarly Football is national game of Spain.

**52.** In the way 'Santhal' is related to 'India', in the same way 'Negro' is related to

(1) Japan (2) Germany (3) Africa, America (4) Nepal

**Ans.** (3)

**Sol.** Santhal is tribe in India, similarly Negro is tribe in Africa.

**53.** In the way 'Red Fort' is related to Delhi, in the same way 'Pyramid' is related to

(1) New York (2) Egypt (3) Landon (4) Berlin

**Ans.** (2)

**Sol.** Red Fort situated in Delhi, similarly Pyramid is situated in Egypt.

**54.** In the way poet is related to poem, in the same way ornaments are related to

(1) Goldsmith (2) Cobbler (3) Carpenter (4) Dance director

**Ans.** (1)

**Sol.** Poet writes poem, similarly Goldsmith makes ornaments.

**55.** In the ways 'area' is related to 'hectare', the same way 'radian' is related to

(1) heat (2) potential (3) resistance (4) angle

**Ans.** (4)

**Sol.** Here, unit of area is hectare similarly unit of angle should be radian.

**56.** The relation that exists between ABC and ZYX, the same relation will exist between CBA and

(1) ZXY (2) BCA (3) XYZ (4) XZY

**Ans.** (3)

Sol.  $\begin{matrix} 1 & 2 & 3 \\ A & B & C \\ \downarrow & \downarrow & \downarrow \\ Z & Y & X \\ 26 & 25 & 24 \end{matrix}$  ,  $\begin{matrix} 3 & 2 & 1 \\ C & B & A \\ \downarrow & \downarrow & \downarrow \\ X & Y & Z \\ 24 & 25 & 26 \end{matrix}$  ,

$1 + 26 = 27$  ,  $2 + 25 = 27$  ,  $3 + 24 = 27$

57. In the way 28 is related to 82 in the same way 36 is related to

- (1) 56 (2) 32 (3) 63 (4) 56

Ans. (3)

Sol. Inverted number

58. Statue of Liberty : USA :: Eiffel Tower “ ?

- (1) New Zealand (2) France (3) Indonesia (4) Japan

Ans. (2)

Sol. Statue of Liberty is situated in USA similarly Eiffel Tower is situated in France

59. In the way Palaeontology is related to Fossil in the same way Pedology is related to

- (1) Blood (2) Plants (3) Soil (4) Tissue

Ans. (3)

Sol. Palaeontology is study of Fossils similarly Pedology is study of Soil

60. In the way White Pigeon is related to peace, the same way Swastik is related to

- (1) Good Luck (2) Prosperity (3) Civilization and culture (4) Danger

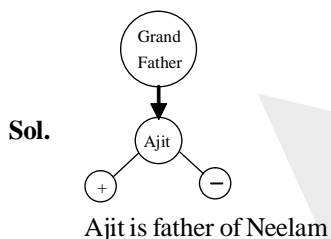
Ans. (2)

Sol. White pigeon is the symbol of peace similarly swastik is the symbol of prosperity

61. Regarding Ajit, Neelam Tells to her friend that ‘He is the only son of grandfather of my own brother’, then how is Neelam related to Ajit?

- (1) Maternal aunt (2) Sister (3) Daughter (4) Paternal aunt

Ans. (3)

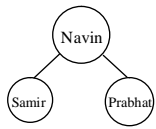


62. Navin, the son of a photographer who is a resident of Nagpur says to Urmila that Prabhat, who is staying in Delhi, is the eldest son the father of Samir. If mother of Samir is the wife of Navin, then what is the relation Prabhat has with Navin?

- (1) Son (2) Brother (3) Nephew (Sister’s son) (4) Nephew (brother’s son)

Ans. (1)

Sol.



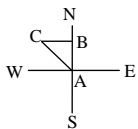
Navin is the father of prabhat and Samir

63. A man walks 12km towards north, After this he walks 5 km towards west then how far is he now from his starting point?

- (1) 22 km                      (2) 17 km                      (3) 5 km                      (4) 13 km

Ans. (4)

Sol.



AB = 12 km

BC = 05 km

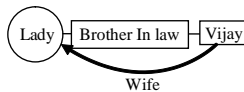
Distance from starting point to the ending point (AC) =  $\sqrt{AB^2 + BC^2} = \sqrt{12^2 + 5^2} = 13 \text{ km}$

64. Pointing to a lady Vijay says that “She is the only sister of my brother-in-law” How is the lady related to Vijay?

- (1) Daughter                      (2) Wife                      (3) Sister                      (4) Sister - in- law

Ans. (2)

Sol.



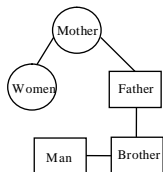
The lady is the wife of Vijay

65. Pointing to a man in a picture a women said, The father of his brother is the only son of my mother’. How is the man related to that woman?

- (1) Grandson                      (2) Nephew (Brother’s son)                      (3) Son                      (4) Brother

Ans. (2)

Sol.



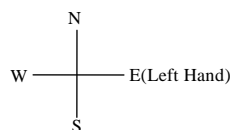
He is the nephew (Brother’s Son)

66. At the time of sunrise a boy was doing exercise by keeping his head down and legs up in the ground. If his left hand is toward east, then in which direction is his face?

- (1) North                      (2) South                      (3) West                      (4) None of these

Ans. (1)

Sol.





**Ans. (4)**

**Sol.** Sameer < Harish < Ambuj < Sumit < Vishal

Vishal stands at the end

**Q. 72-74**

According to the information given below answer the following three questions:

Four girls *A, B, C* and *D* and three boys *E, F* and *G* are sitting simultaneously in such a way that any two boys or any two girls will not sit together.

**72.** Who will sit after *B*?

(1) *F*                                      (2) *B*                                      (3) *D*                                      (4) *C*                                      \*

**Ans. (1)**

**Sol.** *A, E, B, F, C, G, D*

*F* sits after *B*

**73.** Who will sit between *C* and *D*?

(1) *A*                                      (2) *D*                                      (3) *G*                                      (4) *C*

**Ans. (3)**

**Sol.** *A, E, B, F, C, G, D*

*G* sits between *C* & *D*

**74.** Who will sit exactly in the middle?

(1) *F*                                      (2) *G*                                      (3) *C*                                      (4) *B*

**Ans. (1)**

**Sol.** *A, E, B, F, C, G, D*

*F* is exactly in the middle

**75.** If the age of Manohar is greater than that of Ankit and the age of Saroj is not greater than Ankit then whose are among the three is greater?

(1) Saroj                                      (2) Ankit                                      (3) Manohar                                      (4) Cannot be decided

**Ans. (3)**

**Sol.** Manohar > Ankit > Saroj

Manohar is greater

**Q. 76 to 80**

Based on the following information answer the following questions:

(A) In a school classes of different subjects - Commerce, Mathematics, English, Hindi, Urdu and Sanskrit are held in weekdays and Sunday is a holiday.

(B) Commerce class is on Friday and English is taught on Monday. Urdu class is after Hindi. Sanskrit is taught on Thursday after Urdu.

(C) Mathematics class is on one day before holiday.

76. Which subject is taught on Wednesday?

- (1) Hindi (2) Urdu (3) English (4) Sanskrit

Ans. (2)

Sol. Monday -- English

Tuesday-- Hindi

Wednesday-- Urdu

Thursday-- Sanskrit

Friday-- Commerce

Saturday-- Maths

Sunday -- Holiday

Urdu is taught on wednesday

77. Which subject is taught before Hindi?

- (1) English (2) Urdu (3) Sanskrit (4) Mathematics

Ans. (1)

Sol. English is taught before Hindi (for solution refer question No 76)

78. The difference of how many days is there between Urdu and Commerce classes?

- (1) 4 (2) 3 (3) 2 (4) 1

Ans. (4)

Sol. For solution refer question No 76

79. Mathematics class is just after which subject?

- (1) Hindi (2) Mathematics (3) Sanskrit (4) Commerce

Ans. (4)

Sol. For solution refer question No 76

80. The classes start with which subject?

- (1) English (2) Hindi (3) Commerce (4) Sanskrit

Ans. (1)

Sol. For solution refer question No 76

81. On a table the books of Physics, Mathematics, English and Hindi are arranged in such a way that the book of Hindi is just above the book of English and the book of Mathematics is just below that book of Physics. If the book of Physics is just kept below the book of English then which book is kept bottommost?

- (1) Physics (2) English (3) Mathematics (4) Hindi

Ans. (3)

Sol. Hindi

English

Physics

Mathematics

Mathematics is at the bottom



**Q. 82- 84**

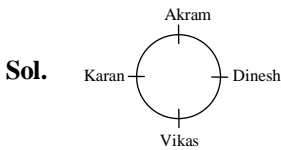
Akram, Vikas, Karan and Dinesh are seated on chairs around a round table. It is seen that

- (A) Akram is seated in front of Vikash
- (B) Dinesh is seated in front of Karan
- (C) Dinesh is seated at the left of Akram

**82.** Who is seated at the left of Vikas?

- (1) Dinesh
- (2) Akram
- (3) Karan
- (4) Cannot be decided

**Ans. (3)**



**83.** Who is not seated at either right or left of Dinesh?

- (1) Vikas
- (2) Akram
- (3) Akram or Vikas
- (4) Karan

**Ans. (4)**

**Sol.** Please refer Q No. 82

**84.** Which statement is not correct?

- (1) Karan is seated in front of Dinesh
- (2) Akram is seated at the left of Karan
- (3) Vikas is not seated in front of Akram
- (4) Vikas is seated at the left of Dinesh

**Ans. (3)**

**Sol.** Please refer Q No. 82

**85.** Which of the following names will come second in the telephone directory?

- (1) Raman
- (2) Rana
- (3) Rahul
- (4) Rajan

**Ans. (4)**

**Sol.** Rahul, Ranjan, Raman, Rana

Ranjan will come second in the directory

**Q. 86-90**

Six books are kept one after the other. History book is just above Civics book, which is just above the Mathematics book. Computer book is not at the topmost. There are four books in between English and Physics books. English book is at topmost and Computer book is just below the English book.

**86.** Which book is in between Civics and Computer books?

- (1) Mathematics
- (2) English
- (3) History
- (4) Physics

**Ans. (3)**

**Sol.** English

Computer

History

Civics

Mathematics

Physics

History is in between civics and computer

87. How many books are above Physics book?

- (1) 1                                      (2) 2                                      (3) 3                                      (4) 5

Ans. (4)

Sol. For table of books please refer Q No 86.

88. Which book is at bottommost ?

- (1) Computer                              (2) History                              (3) Civics                              (4) Physics

Ans. (4)

Sol. For table of books please refer Q No 86.

89. Which book is just below the History book ?

- (1) Civics                              (2) Mathematics                              (3) Physics                              (4) Computer

Ans. (1)

Sol. For table of books please refer Q No 86.

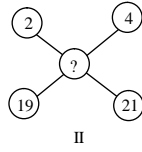
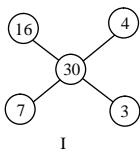
90. How many books are there in between Computer and Physics books?

- (1) 1                                      (2) 2                                      (3) 3                                      (4) 4

Ans. (3)

Sol. For table of books please refer Q No 86.

91. Find the missing number in the diagram



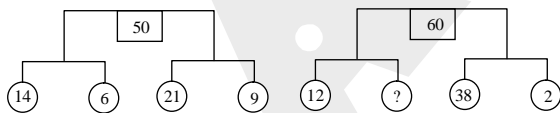
- (1) 46                                      (2) 47                                      (3) 48                                      (4) 45

Ans. (1)

Sol.  $16 + 4 + 7 + 3 = 30$

$$2 + 4 + 21 + 19 = 46$$

92. Find the missing number in the diagram :



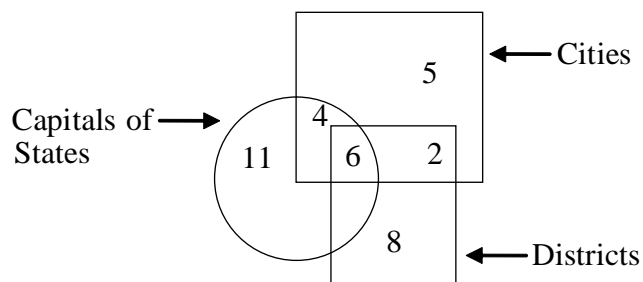
- (1) 12                                      (2) 8                                      (3) 6                                      (4) 7

Ans. (2)

Sol.  $(14 + 6) + (21 + 9) = (20 + 30) = 50$

$$(12 + x) + (38 + 2) = 60$$





97. How many such cities are there which are neither capitals of states nor districts?

- (1) 6                                      (2) 5                                      (3) 4                                      (4) 7

Ans. (2)

Sol. From the Venn diagram

98. How many such cities are there which are also capitals of states?

- (1) 4                                      (2) 8                                      (3) 6                                      (4) 11

Ans. (1)

Sol. From the Venn diagram

99. How many such districts are there which are cities as well as capitals of states?

- (1) 11                                      (2) 8                                      (3) 7                                      (4) 6

Ans. (4)

Sol. From the Venn diagram

100. How many such cities are there which are also districts?

- (1) 8                                      (2) 1                                      (3) 3                                      (4) 2

Ans. (4)

Sol. From the Venn diagram