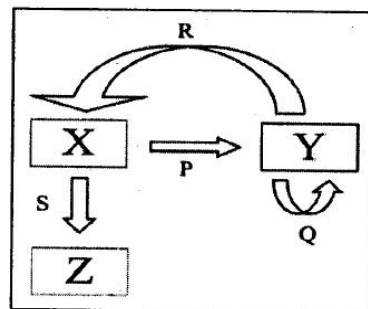


INDIAN ASSOCIATION OF PHYSICS TEACHERS
NATIONAL STANDARD EXAMINATION IN JUNIOR SCIENCE (NSEJS) 2019 – 20
Question Paper Code: 54
Held on: November 17, 2019

1. A group of students was studying development of an organism under controlled laboratory conditions. Following observations were made by them.
- The larvae has a rod – like supporting structure that separated the nervous system and the gut.
 - A prominent central cavity was present in the transverse section of the part of the nervous system of the larvae; while the adults had cerebral ganglia as the main component of the nervous system.
 - The eyes were prominently seen in larvae.
 - The tails were absent in the adults, which the larvae had.
 - A lot of phagocytic activity was observed before conversion of larvae into adults.
 - The adults has a cuticular exoskeleton.
- The organism under study must be belonging to:
- | | |
|-------------------|----------------|
| (a) Amphibia | (b) Pisces |
| (c) Protochordata | (d) Arthropoda |
2. In case of mice coat colour, two genes are responsible for colour of the hair. Gene 'A' is responsible for distribution of pigments on shaft of hair. Wild type allele of 'A' produces a yellow band on dark hair shaft (agouti), whereas recessive allele produces no yellow band. There is another allele of A, known as A^Y , which is embryonic lethal in homozygous condition only. In an experiment, two yellow mice were crossed to obtain a progeny of 6 pups. What would be the most probable number of agouti mice among them?
- | | |
|-------|-----------------------|
| (a) 0 | (b) 2 |
| (c) 4 | (d) None of the above |
3. A stain was developed by a group of scientists to stain a particular cell organelle. The stain was tested on various tissues derived from an autopsy sample from a mammal. The organelles were counted. The result showed maximum number of the organelles in cells of brain, lesser in cells of heart, least in mature sperms and absent in erythrocytes. Identify the organelles from following options.
- | | |
|------------------|---------------------------|
| (a) Nissl bodies | (b) Mitochondria |
| (c) Golgi bodies | (d) Endoplasmic reticulum |
4. *Pinus sylvestris* grows at low temperatures in Russia. The plant survives under such freezing conditions due to the presence of:
- | | |
|---|---|
| (a) Saturated lipids in plasma membrane | (b) Glycoproteins in plasma membrane |
| (c) Glycolipids in plasma membrane | (d) Polyunsaturated lipids in plasma membrane |
5. In an experiment setup, certain pathogen caused a disease in primates with nasal congestion, sore throat and fever being the common symptoms. The scientists injected an extract from blue – green mold as the first line of action. However, the symptoms did not subside. The possible causative agents of the disease were listed out as follows:
- | | |
|--|----------------|
| i. a virus | ii. A fungus |
| iii. a conjugation deficient bacterium | iv. A tapeworm |
- Choose the correct option from the following that indicate the pathogen.
- | | |
|------------|--------------|
| (a) i, ii | (b) i, iii |
| (c) ii, iv | (d) iii only |

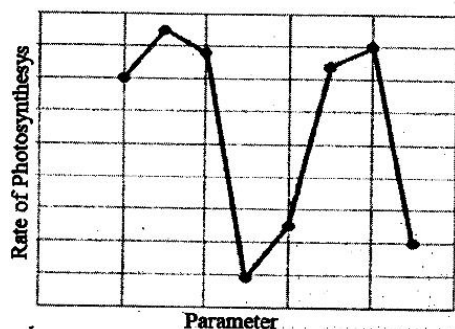
6. A process is represented in the adjacent figure. The arrows indicate the flow of a biochemical reaction. The arrowhead points to the product, while the base of the arrow indicates the template biomolecule. What do P, Q, R and S represent?



- (a) P : Replication, Q : Translation, R : Transcription, S : Reverse Transcription
 (b) P : Transcription, Q : Replication, R : Reverse Transcription, S : Translation
 (c) P : Reverse Transcription, Q : Replication, R : Translation, S : Transcription
 (d) P : Reverse Transcription, Q : Replication, R : Transcription, S : Translation
7. The whooping cranes were on the verge of extinction with only 21 individuals in wild in 1941. After conservation measures, the cranes are now included in the endangered category by IUCN. The highlight of the conservation efforts is the reintroduction of the whooping cranes in wild. This was possible due to raising of the young cranes in absence of their parents by biologists dressed in crane costumes. Aircraft Guided bird migration technique was used for teaching the captive – bred cranes to follow the scientists to learn the migratory route. What type of animal behaviour might be responsible for these captive – bred cranes to follow the crane costume dressed scientists?
- (a) Cognitive learning (b) Habituation
 (c) Operant conditioning (d) Genetic Imprinting
8. A 4 μm long bacterial cell was magnified and drawn to a dimension of 6 cm. How many times has it been magnified?
- (a) 1.5×10^3 (b) 15×10^4
 (c) 1.5×10^4 (d) 1.5
9. In the baking industry, when the dough is prepared, various ingredients are mixed together with the flour. At one instance, the dough was fermented, but failed to rise sufficiently during the baking process. Choose the correct cause(s) from following possibilities.
- i. The salt was mixed before the fermentation process was completed
 ii. The sugar was added in excess.
 iii. Yeast granules were not activated prior to mixing with the flour
- (a) i, iii (b) iii only
 (c) i, ii, iii (d) i, ii
10. Given below are four statements:
- I. Prokaryotic cells are unicellular while eukaryotes are multicellular.
 II. Histones are present in eukaryotes and absent in prokaryotes
 III. The nucleoid contains the genetic material in prokaryotes and eukaryotes
 IV. Prokaryotic flagellum is composed of flagellin while eukaryotic flagellum is composed of tubulin.
- Identify which amongst these are false
- (a) I and II (b) III and IV
 (c) II and III (d) I and III

11. The students of a college were working on regeneration using *Planaria* (Platyhelminthes) and *Asterias* (Echinodermata). *Planaria* was cut in three pieces, namely, a piece with head, with tail and the middle piece. *Asterias* (bearing five arms) was cut in such a way that after separation, six pieces were obtained, namely, an arm with a portion of the central disc, four pieces cut from tips of each of the remaining arms and the remaining body. The animals were allowed to regenerate completely. How many *Planaria* and *Asterias* respectively will be obtained after the completion of regeneration in both?
- (a) 1, 1 (b) 3, 2
(c) 3, 6 (d) 1, 2
12. Fecundity in animals world is the maximum possible ability of an individual of produce offsprings during its entire lifetime. Following factors were checked for their effect on fecundity of different animal models.
- Availability of food during breeding season
 - Mode of fertilization
 - Population density
- Which of these factor(s) can regulate fecundity?
- (a) i, ii (b) ii, iii
(c) i, ii, iii (d) None of the above
13. In case of peppered moths, pale and dark moths are observed. Pale variety is known to be the wild type variety. During industrial revolution, industrial melanism led to prevalence of dark variety around the cities and pale variety continued to be in majority in areas away from the industries. After enforcement of regulations for controlling pollution, reappearance of pale moths in majority was observed around cities again. Driving force(s) for these adaptive changes is/are:
- In creased pollution around industries
 - A stable transposition of a gene in moths
 - Limitations of the vision of birds to differentiate dark moths on darkened barks and pale moths in presence of lichens
 - Ability of lichens to grow on barks in less polluted areas only
- (a) i, iv (b) i, iii, iv
(c) i, ii (d) i, ii, iii and iv
14. Four different human body fluid samples were subjected to quantification of hydrogen ion concentration. mEq/L is the unit of measurement for hydrogen ion concentration. The results of the experiment were as follows:
- | | |
|-------------------------------------|---------------------------------------|
| Sample A : 1.6×10^2 units | Sample B : 4.5×10^{-5} units |
| Sample C : 1×10^{-3} units | Sample D : 3×10^{-2} units |
- Identify the samples in sequence from A to D
- (a) Gastric HCl, Venous blood, Intracellular Fluid, Urine
(b) Venous blood, Intracellular Fluid, Gastric HCl, Urine
(c) Urine, Gastric HCl, Venous blood, Intracellular Fluid
(d) Intracellular Fluid, Urine, Gastric HCl, Venous blood
15. Any damage or injury to a particular area causes nociceptors to release some chemicals, which carry the signal to the higher centres in the nervous system for the processing and a subsequent action. However, there is a difference in the way in which the stimulus is received which is related to the acuity of the detection. Fingertips are more sensitive as compared to the forearm. Following reasons for the observed phenomenon were suggested.
- The receptive fields in the fingertip are smaller.
 - The number of nociceptors per receptive field in the forearm is lesser.
 - The amount of prostaglandins released by the nociceptors per receptive field is more in fingertips.
- The most probable reason(s) for this may be:
- (a) i (b) i, iii
(c) ii, iii (d) i, ii, iii

16.



Rate of photosynthesis in hydrophytes depends on various parameters. The adjacent graph shows the effect of one parameter (while keeping all the others constant) on the rate of photosynthesis. Rate of photosynthesis is plotted on Y axis. Identify the parameter which is plotted along X axis.

- (a) light intensity
(c) temperature

- (b) wavelength
(d) CO₂ concentration

17. An organism has 27 pairs of homologous chromosomes. In each daughter cell after completion of meiosis II, ___ and ___ chromosomes would be present respectively.

- (a) 27 and 27
(c) 108 and 54

- (b) 54 and 27
(d) 54 and 108

18. Gymnosperm are called 'naked seed bearing plants' because they lack:

- (a) Male gamete
(c) Ovary

- (b) Ovule
(d) Seeds

19. Rahul sprayed a chemical 'X' on a plant with rosette habit. After few days, he found the internodal distances to have increased suddenly. The chemical 'X' might be:

- (a) Ethylene
(c) Auxin

- (b) Abscisic acid
(d) Gibberellic acid

20. On a study tour, plants with leathery leaves with thick cuticle, vivipary, salt glands, apogeotropic roots, and stomata limited to abaxial surface were observed. The plants might be:

- (a) Bromeliads
(c) Mangroves

- (b) Cycads
(d) None of the above

21. An element Y is a white translucent solid at room temperature and exhibits various allotropic forms. Some compounds of element Y find application in agricultural industry. Y forms two solid oxides which dissolve in water to form comparatively weak acids. The element Y is:

- (a) sulphur
(c) phosphorus

- (b) nitrogen
(d) carbon

22. How many sigma bonds are present between any two carbon atoms in fullerenes?

- (a) 1
(c) 3

- (b) 2
(d) 4

23. Four gram of mixture of calcium carbonate and sand is treated with excess of HCl and 0.880 g of carbon-di-oxide is produced. What is the percentage of calcium carbonate in original mixture?

- (a) 40%
(c) 55%

- (b) 50%
(d) 45%

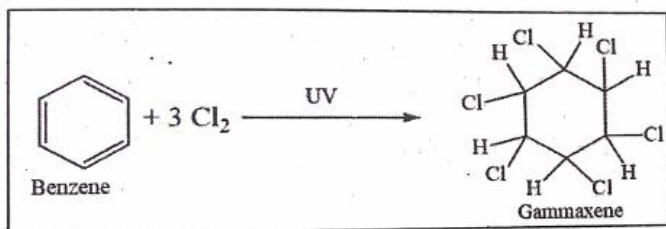
24. A student was studying reactions of metals with dilute NaOH at room temperature. The student took dilute NaOH in four different test tubes and added copper powder to test tube A, zinc dust to test tube B, aluminium powder to test tube C and iron powder to test tube D and observed effervescence in _____

- (a) test tubes A & B
(c) test tubes C & D

- (b) test tubes B & C
(d) test tubes A & D

25. A magician performed following act: He dipped Rs 50 note in a 50% solution of alcohol in water and held it on the burning flame, but the note did not burn. The reason behind this is
- the alcohol kept on dousing the fire
 - air required for burning was not available
 - the Rs 50 note failed to reach ignition temperature
 - The Rs 50 note is fire proof

26.

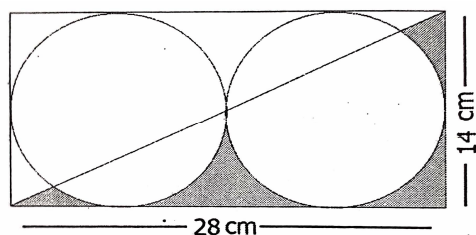


Gammaxene insecticide powder is prepared by the reaction given in the adjacent box. If 78 g of benzene were reacted with 106.5 g of chlorine, how much Gammaxene would be formed?

- 140 g
 - 154.5 g
 - 145.5 g
 - 160 g
27. Arrange the following solutions in increasing hydronium ion concentration. The solutions are:
- | | |
|--------------------------------|--|
| (P) 0.1 M HCl | (Q) 0.1 M H ₂ SO ₄ |
| (R) 0.001 M NH ₄ OH | (S) 0.001 M Ca(OH) ₂ |
- The correct order will be
- P > Q > R > S
 - Q > P > S > R
 - S > R > Q > P
 - S > R > P > Q
28. A zinc rod was dipped in 100 cm³ of 1 M copper chloride solution. After certain time the molarity of Cu²⁺ ions in the solution was found to be 0.8 M. If the weight of zinc rod is 20 g, then the molarity of chloride ions is _____
- 2 M
 - 1.5 M
 - 1 M
 - 0.5 M
29. Which of the following polymeric material will be ideal for remoulding?
- Polythene and melamine
 - Polyvinyl chloride and polythene
 - Melamine and bakelite
 - Bakelite and polyvinyl chloride
30. When four dilute solutions of (I) vinegar, (II) common salt, (III) caustic soda and (iv) baking soda are tested with universal indicator which will be the correct observation
- I-Green, II-Violet, III-Blue, IV-Red
 - I-Green, II-Blue, III-Violet, IV-Red
 - I-Red, II-Green, III-Violet, IV-Blue
 - I-Red, II-Violet, III-Green, IV-Blue
31. Substance X is white crystalline solid which melts after 10 seconds on burner flame. It is soluble in water and insoluble in CCl₄. It is a poor conductor of electricity in molten state as well as in the form of aqueous solution, hence we conclude that substance X is
- an ionic compound
 - a non-polar covalent compound
 - a polar covalent compound
 - a pure element
32. In a beaker 50 mL of a normal HCl solution was taken and NH₃ gas was passed through it for some time. The contents of the beaker were then titrated, which required 60 mL of semi normal NaOH solution. How much ammonia was passed through the beaker?
- 0.85 g
 - 0.34 g
 - 0.51 g
 - 0.4 g
33. Which is the correct order of metals with reference to their melting point in increasing order?
- Hg, Ga, Li, Ca
 - Ca, Li, Ga, Hg
 - Hg, Li, Ga, Ca
 - Hg, Ga, Ca, Li

34. Sodium tungstate has formula Na_2WO_4 , lead phosphate has formula $\text{Pb}_3(\text{PO}_4)_2$, formula for lead tungstate should be:
 (a) PbWO_4 (b) $\text{Pb}_2(\text{WO}_4)_3$
 (c) $\text{Pb}_3(\text{WO}_4)_2$ (d) $\text{Pb}_3(\text{WO}_4)_4$
35. What is the ratio of reducing agent to oxidizing agent, if the following reaction is correctly balanced?
 $\text{NH}_3 + \text{O}_2 \longrightarrow \text{NO} + \text{H}_2\text{O}$
 (a) 4:5 (b) 5:4
 (c) 5:3 (d) 3:5
36. Which of the following is iso-structural with CO_2 ?
 (a) NO_2 (b) N_2O_4
 (c) NO (d) N_2O
37. In one litre of pure water, 44.4 g of calcium chloride is dissolved. The number of ions in one mL of the resultant solution is:
 (a) 7.23×10^{23} (b) 7.23×10^{20}
 (c) 4.82×10^{23} (d) 4.82×10^{20}
38. Which of the following species is/are isoelectronic with Neon?
 (i) N^{3-} (ii) Mg^{2+}
 (iii) K^+ (iv) Ca^{2+}
 (a) only (iv) (b) only (ii)
 (c) both (i) & (ii) (d) both (i) and (iii)
39. Which of the following gases will have equal volume at STP, if the weight of gases is 14.0 g?
 (i) N_2O (ii) NO_2
 (iii) N_2 (iv) CO
 (a) (i) & (ii) (b) (i) and (i)
 (c) (ii) and (iii) (d) (iii) and (iv)
40. Which of the following are not ionic?
 (i) AlCl_3 (ii) CaCl_2 (iii) MgCl_2 (iv) LiCl
 (a) (i) and (iv) (b) (i) and (ii)
 (c) (ii) and (iii) (d) (iii) and (iv)
41. Apples dropping from apple trees were observed by many people before Newton. But why they fall, was explained by Issac Newton postulating the law of universal gravitation. Which of the following statements best describes the situation?
 (a) The force of gravity acts only on the apple
 (b) The apple is attracted towards the surface of the earth
 (c) Both earth and apple experience the same force of attraction towards each other
 (d) Apple falls due to earth's gravity and hence only (a) is true and (c) is absurd

42.



A rectangular metal plate, shown in the adjacent figure has a charge of $420 \mu\text{C}$ assumed to be uniformly distributed over it. Then how much is the charge over the shaded area? No part of metal plate is cut. (Circles and the diagonal are shown for clarity only. $\pi = 22/7$)

- (a) $45 \mu\text{C}$ (b) $450 \mu\text{C}$ (c) $15 \mu\text{C}$ (d) $150 \mu\text{C}$

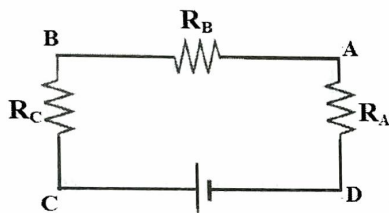
43. A piece of wire P and three identical cells are connected in series. An amount of heat is generated in a certain time interval in the wire due to passage of current. Now the circuit is modified by replacing P with another wire Q and N identical cells, all connected in series. Q is four times longer in length than P. The wire P and Q are of same material and have the same diameter. If the heat generated in second situation is also same as before in the same time interval, then find N.

(a) 4 (b) 6 (c) 16 (d) 36

44. A piece of ice is floating in water at 4°C in a beaker. When the ice melts completely, the water level in the beaker will

(a) rise (b) fall (c) remains unchanged (d) unpredictable

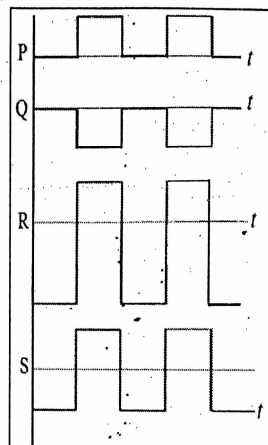
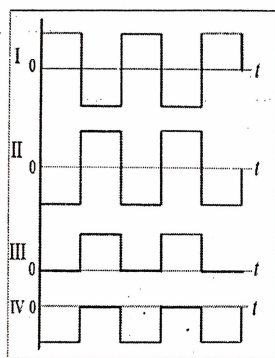
45.



In the adjacent circuit, the voltages across AD, BD and CD are 2 V, 6 V and 8 V respectively. If resistance $R_A = 1\text{ k}\Omega$, then the values of resistances R_B and R_C are _____ and _____ respectively.

- (a) $4\text{ k}\Omega$ and $6\text{ k}\Omega$
 (b) $2\text{ k}\Omega$ and $1\text{ k}\Omega$
 (c) $1\text{ k}\Omega$ and $2\text{ k}\Omega$
 (d) data insufficient as battery voltage is not given

46.



Some waveforms among I, II, III and IV superpose (add graphically) to produce the waveforms P, Q, R and S. Among the following, match the pairs that give the correct combinations:

Resultant

Superposition of

P
Q
R
S

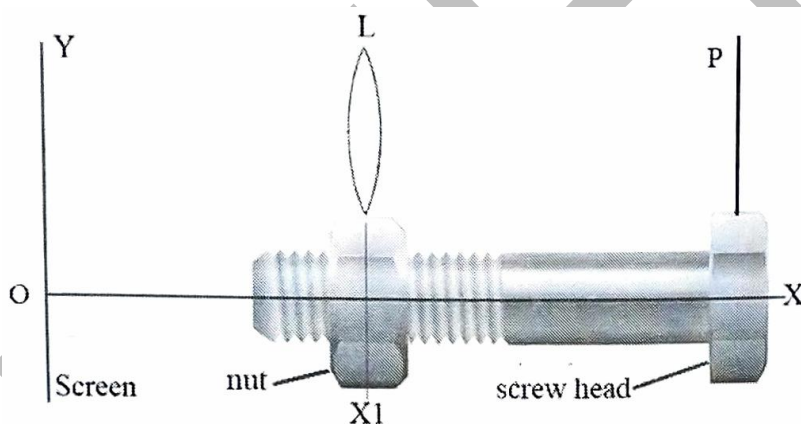
(K) III and IV
 (L) II and IV
 (M) I, II and III
 (N) I and IV
 (O) II and III

- (a) $P \leftrightarrow O, Q \leftrightarrow N, R \leftrightarrow L, S \leftrightarrow M$ (b) $P \leftrightarrow M, Q \leftrightarrow N, R \leftrightarrow L, S \leftrightarrow K$
 (c) $P \leftrightarrow M, Q \leftrightarrow N, R \leftrightarrow K, S \leftrightarrow L$ (d) $P \leftrightarrow O, Q \leftrightarrow M, R \leftrightarrow L, S \leftrightarrow K$

53. A physics teacher and his family are travelling in a car on a highway during a severe lightning storm. Choose the correct option:
- Safest place will be inside the car as the charges due to lightning tend to remain on the metal sheet / skin of the vehicle if struck by lightning.
 - It's too dangerous to be inside the car. As the car has a metal body the charges tend to accumulate on the surface and will generate a strong electric field inside the car.
 - Safest place is under a tree. It's better to get drenched under a tree as the wet tree will provide a path to the charges for earthing.
 - It is safer to exit the car and stand on open ground.

54. The radius of curvature of a convex mirror is 'x'. The distance of an object from focus of this mirror is 'y'. Then what is the distance of image from the focus?
- $y^2 / 4x$
 - x^2 / y
 - $x^2 / 4y$
 - $4y^2 / x$

55. In a screw-nut assembly (shown below) the nut is held fixed in its position and the screw is allowed to rotate inside it. A convex lens (L) of focal length 6.0 cm is fixed on the nut. An object pin (P) is attached to the screw head. The image of the object is observed on a screen Y. When the screw head is rotated through one rotation, the linear distance moved by the screw tip is 1.0mm. The observations are made only when the image is obtained in the same orientation on the screen. At a certain position of P, the image formed is three times magnified as that of the pin height. Through how many turns should the screw head be rotated so that the image is two times magnified?



- 8
 - 10
 - 12
 - 14
56. The triangular face of a crown glass prism ABC is isosceles. Length AB = length AC and the rectangular face with edge AC is silvered. A ray of light is incident normally on rectangular face with edge AB. It undergoes reflections at AC and AB internally and it emerges normally through the rectangular base with edge BC. Then angle BAC of the prism is _____
- 24°
 - 30°
 - 36°
 - 42°

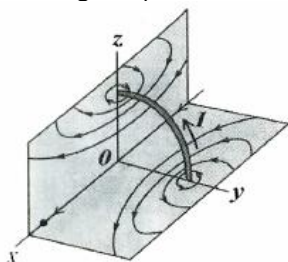
57. A sound wave is produced by a vibrating metallic string stretched between its ends. Four statements are given below. Some of them are correct.
- Sound wave is produced inside the string.
 - Sound wave in the string is transverse.
 - Wave length of the sound wave in surrounding air is equal to the wavelength of the transverse wave on the string.
 - Loudness of sound is proportional to the square of the amplitude of the vibrating string.

Choose the correct option.

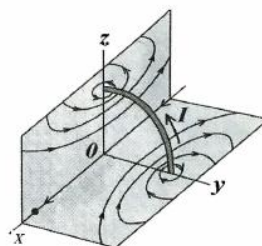
- P
- R and S
- P and Q
- S

58. A conductor in the form of a circular loop is carrying current I . The direction of the current is as shown. Then which figure represents the correct direction of magnetic field line on the surfaces of the plane XY and XZ . (Consider those surfaces of XY and XZ planes which are seen in the figure.)

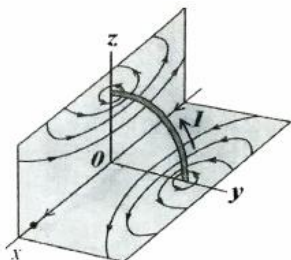
(a)



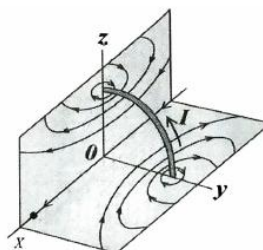
(b)



(c)



(d)



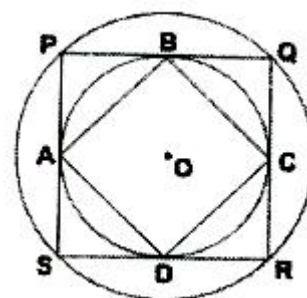
59. A school is located between two cliffs. When the metal bell is struck by school attendant. First echo is heard by him after 2.4 s and second echo follows after 2.0 s for him at the same position near the bell. If the velocity of sound in air is 340 ms^{-1} at the temperature of the surroundings, then the distance between the cliffs is approximately _____.
- (a) 0.488 km (b) 0.751 km (c) 1.16 km (d) 1.41 km

60. A new linear scale of temperature measurement is to be designed. It is called a 'Z scale' on which the freezing and boiling points of water are 20 Z and 220 Z respectively. What will be the temperature shown on the 'Z scale' corresponding to a temperature of 20°C on the Celsius scale?
- (a) 10 Z (b) 20 Z (c) 40 Z (d) 60 Z

61. Let α and β be the roots of $x^2 - 5x + 3 = 0$ with $\alpha > \beta$. If $a_n = \alpha^n - \beta^n$ for $n \geq 1$ then the value of $\frac{3a_6 + a_8}{a_7}$ is
- (a) 2 (b) 3
(c) 4 (d) 5

62. In the given figure, two concentric circles are shown with centre O. PQRS is a square inscribed in the outer circle. It also circumscribes the inner circle, touching it at points B, C, D and A. What is the ratio of the perimeter of the outer circle to that of quadrilateral ABCD?

- (a) $\frac{\pi}{4}$ (b) $\frac{3\pi}{2}$
(c) $\frac{\pi}{2}$ (d) π



63. In rectangle ABCD, AB = 5 and BC = 3. Points F and G are on the line segment CD so that DF = 1 and GC = 2. Lines AF and BG intersect at E. What is the area of AEB?
- (a) 10 sq. units (b) $\frac{15}{2}$ sq. units
(c) $\frac{25}{2}$ sq. units (d) 20 sq. units
64. The number of triples (x, y, z) such that any one of these numbers is added to the product of the other two, the result is 2, is
- (a) 1 (b) 2
(c) 4 (d) infinitely many
65. What is the product of all the roots of the equation $\sqrt{5|x|+8} = \sqrt{x^2-16}$?
- (a) -64 (b) -24
(c) 576 (d) 24
66. How many positive integers N give a remainder 8 when 2008 is divided by N.
- (a) 12 (b) 13
(c) 14 (d) 15
67. LCM of two numbers is 5775. Which of the following cannot be their HCF?
- (a) 175 (b) 231
(c) 385 (d) 455
68. If a, b, c are distinct real numbers such that $a + \frac{1}{b} = b + \frac{1}{c} = c + \frac{1}{a}$ evaluate abc.
- (a) $\pm\sqrt{2}$ (b) $\sqrt{2}-1$
(c) $\sqrt{3}$ (d) ± 1
69. Mr. X with his eight children of different ages is on a family trip. His oldest child, who is 9 years old saw a license plate with a 4 – digit number in which each of two digits appear two times. "Look daddy!" she exclaims. "That number is evenly divisible by the age of each of us kids!". "That's right," replies Mr. X, "and the last two digits just happen to be my age". Which of the following is not the age of one of Mr. X's children?
- (a) 4 (b) 5
(c) 6 (d) 7
70. How many numbers lie between 11 and 1111 which divided by 9 leave a remainder 6 and when divided by 21 leave a remainder 12?
- (a) 18 (b) 28
(c) 8 (d) None of these
71. If the equation $(\alpha^2 - 5\alpha + 6)x^2 + (\alpha^2 - 3\alpha + 2)x + (\alpha^2 - 4) = 0$ has more than two roots, then the value of a is
- (a) 2 (b) 3
(c) 1 (d) none of these
72. The sum of the roots of $\frac{1}{x+a} + \frac{1}{x+b} = \frac{1}{c}$ is zero. The product of roots is
- (a) 0 (b) $\frac{a+b}{2}$
(c) $-\frac{1}{2}(a^2 + b^2)$ (d) $2(a^2 + b^2)$

73. The solution of the equation $1 + 4 + 7 + \dots + x = 925$ is
 (a) 73 (b) 76
 (c) 70 (d) 74
74. Two unbiased dice are rolled. What is the probability of getting a sum which is neither 7 nor 11?
 (a) $\frac{7}{9}$ (b) $\frac{7}{18}$
 (c) $\frac{2}{9}$ (d) $\frac{11}{18}$
75. An observer standing at the top of a tower, finds that the angle of elevation of a red bulb on the top of a light house of height H is α . Further, he finds that the angle of depression of reflection of the bulb in the ocean is β . Therefore, the height of the tower is
 (a) $\frac{H(\tan\beta - \tan\alpha)}{(\tan\beta + \tan\alpha)}$ (b) $\frac{H\sin(\beta - \alpha)}{\cos(\alpha + \beta)}$
 (c) $\frac{H(\cos\alpha - \cos\beta)}{(\cot\alpha + \cot\beta)}$ (d) H
76. In the convex quadrilateral ABCD, the diagonals AC and BD meet at O and the measure of angle AOB is 30° . If the areas of triangle AOB, BOC, COD and AOD are 1, 2, 8 and 4 square units respectively, what is the product of the lengths of the diagonals AC and DB in sq. units?
 (a) 60 (b) 56
 (c) 54 (d) 64
77. If $\tan\theta + \sec\theta = 1.5$, then value of $\sin\theta$ is
 (a) $\frac{5}{13}$ (b) $\frac{12}{13}$
 (c) $\frac{3}{5}$ (d) $\frac{2}{3}$
78. If $\sin^2 x + \sin^2 y + \sin^2 z = 0$, then which of the following is NOT a possible value of $\cos x + \cos y + \cos z$?
 (a) 3 (b) -3
 (c) -1 (d) -2
79. Find the remainder when x^{51} is divided by $x^2 - 3x + 2$
 (a) x (b) $(2^{51} - 2)x + 2 - 2^{51}$
 (c) $(2^{51} - 1)x + 2 - 2^{51}$ (d) 0
80. In an equilateral triangle, three coins of radii 1 unit each are kept so that they touch each other and also sides of the triangle. The area of triangle ABC (in sq. units) is
 (a) $4 + 2\sqrt{3}$ (b) $4\sqrt{3} + 6$
 (c) $12 + \frac{7\sqrt{3}}{4}$ (d) $3 + \frac{7\sqrt{3}}{4}$